

## SYM7BH Multifunctional Edge Profiling Machine

Picture



### General Introduction

**SYM7BH Multifunctional Edge Polishing Machine is mainly used to profile/shape & polish the straight & curved edge of stone slab, with the features of semi-automation, hermetically oil-immersed track ,digital speed-control system, humanization design of operation panel, etc. The travel motor adopts Continuously Various Transmission (CVT) and this will meet the users various need. Also you can use it to do some simple drilling jobs.**

**This machine with CE Mark.**

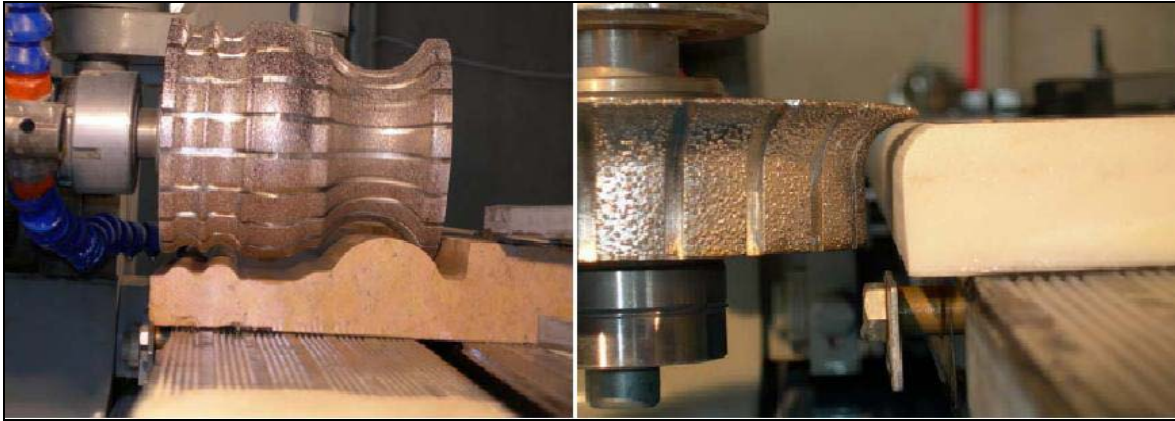
### Main Technical Data

Main Motor Power	4.75Kw/3.75Kw (double speed)
Travel Motor Power	0.65KW (stepless)
Travel Speed	0.38-1.92m/min (50HZ)
	0.46-2.30m/min (60HZ)
Feeding Tools speed (Auto)	0.62-3.1mm/Sec (50HZ)
	0.74-3.72mm/Sec (60HZ)
Rotation speed for profile wheel	1900/3800 rpm
Processing length	3100(mm)
Maximum processing width	600mm (for profile surface of stone)
Maximum processing thickness	150mm
Gross Power	3.75--4.75Kw
Grinding Wheel Diameter	140--200mm
Grinding Wheel Arbor Size	30mm
Rotation speed of Grinding Wheel	3800rpm(Fast);1900rpm(Slow)
Drilling diameter	Ø6mm-Ø100mm
Traveling distance	The distance set as required
Rotation angle of motor head	Random
Curved border profiling	Inner and external curves
Adjustable angle of grinding head	±8 degree
Exhausted Water	1.7m <sup>3</sup> /h
Voltage	380/220/415v (four wire three phase)
Weight	1450KGS
Overall Dimension	3800×1500×1510(L×W×H)

Picture of Main Part: Control Board ;Motor



## Picture of Diamond Profile Wheel



## Stone Edge for Reference



## Unit Price of MACHINE:

**£11250.00 DELIVERY TO UK DOCKS**

*All important parts(such as electric parts, guilder way ) come from the world-famous manufacturers*



*and this will ensure the machine stable performance, good adaptability, high precision, high reliability & long lifetime.*

*Guarentee period one year (12months), provide free replacements during the guarantee period, if quality issues of the commodity is not impersonal factors, but this service only limited in UK, we can via email or telephone to solve problems, if customer ask for arrange technicians come to fix it, then, flights charges and 3stars up hotel and normal board must provided by buyer, When guarantee period expires, we will only charge for the cost of component replacement, At the same time acceptance arrives within 30 days, if the client is dissatisfactory, can termless return money, but buyer charges all fees and freight*



## Introduction of Diamond Profile Wheel & Polishing Wheel:

Diamond profile wheel and polishing wheel are tools to get a desired pattern on the stone edge or surface by use on Stone Edge Polishing Machine. As for Diamond Profile Wheel, there are three kinds of wheel in the terms of manufacturing method. That is, Diamond Sintered (Profile) Wheel, Diamond Electroplated Wheel, Diamond Vacuum Brazed Wheel.

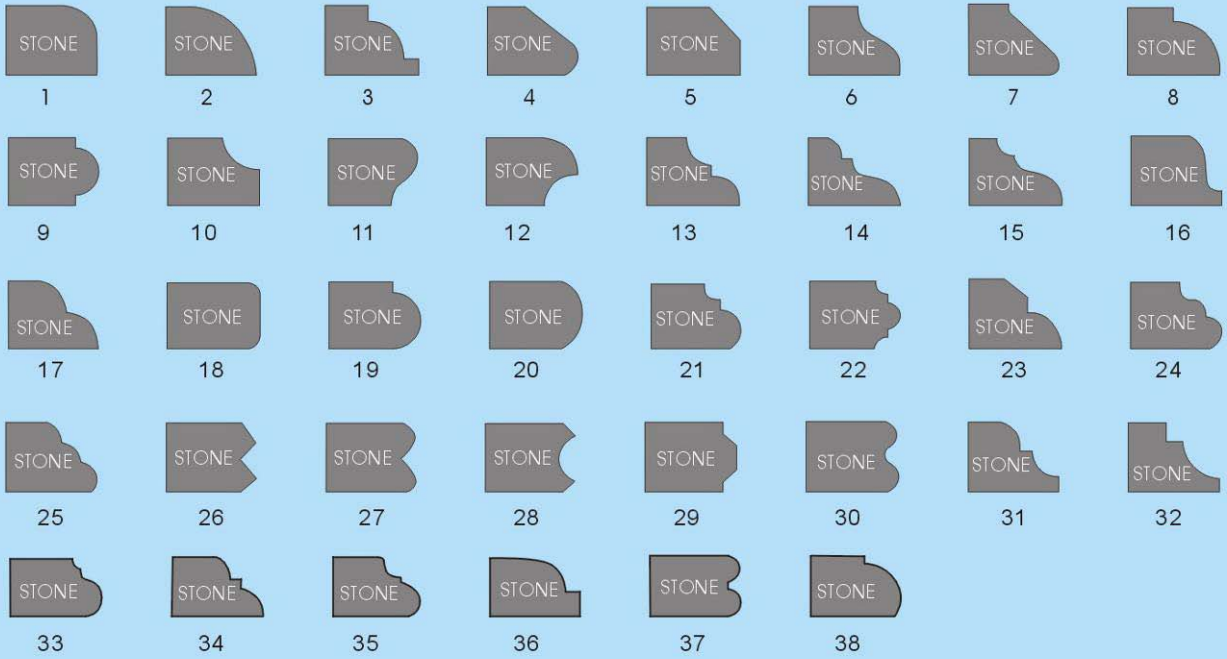
As sintered wheel removes stock aggressively while vacuum brazed wheel is regarded as never loose shape, we can take advantage of their merits.

For example, For Granite, **Step.1: Sintered Wheel (Coarse grit), Step.2 & 3: Vacuum Brazed Wheel (Medium, Fine Grit) Step.4 & 5 & 6 & 7 Polishing Wheel.**

Picture	For Granite	For Marble
 <p><b>Sintered Profile Wheel</b></p>	<p><b>D140mm*30mm hole</b> *Grit 40/45# (Step.1) 2CM=79.00£/PC 3CM=104.00£/PC</p>	<p><b>D140mm*30mm hole</b> *Grit 35/40# (Step.1) 2CM=79.00£/PC 3CM=104.00£/PC</p>
 <p><b>Vacuum Brazed Profile Wheel</b></p>	<p><b>D140mm*30mm hole</b> *Grit 80/100# (Step.2) 220#(Step.3) 2CM=73.00£/PC 3CM=95.00£/PC</p>	<p><b>D140mm*30mm hole</b> *Grit 80/100# (Step.2) 220#(Step.3) 2CM=73.00£/PC 3CM=95.00£/PC</p>
 <p>4# white    3# yellow    2# red    1# green</p> <p><b>Polishing Wheel</b></p>	<p><b>D160mm*30mm hole</b> *Grit 500# 800# 1500# 3000# (Step.4.5.6.7) 2CM=140.00£/Set 3CM=160.00£/Set</p>	<p><b>D160mm*30mm hole</b> *Grit 800# 1500# 3000# (Step.5.6.7) 2CM=133.00£/Set 3CM=150.00£/Set</p>
<b>Totally amount</b>	<p>2CM=232.00£/Set 3CM=299.00£/Set</p>	<p>2CM= 235.00£/Set 3CM=289.00£/Set</p>

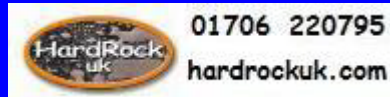
**Stone Profile Code as following:**

## DESIGN



**SPECIAL DESIGN AVAILABLE**

***Thanks for your time!***



Oliver Bohlen Owner

The stone yard

Holcombe Road

Helmshore Rossendale

Lancashire BB4 6TD